

LANSKY[®]
SHARPENERS



OUTDOOR



KITCHEN



SHOP

PRODUCT CATALOG

LANSKY®

SHARPENERS



OVER 35 YEARS OF INNOVATION

contents:
The ultimate
sharpening
technology

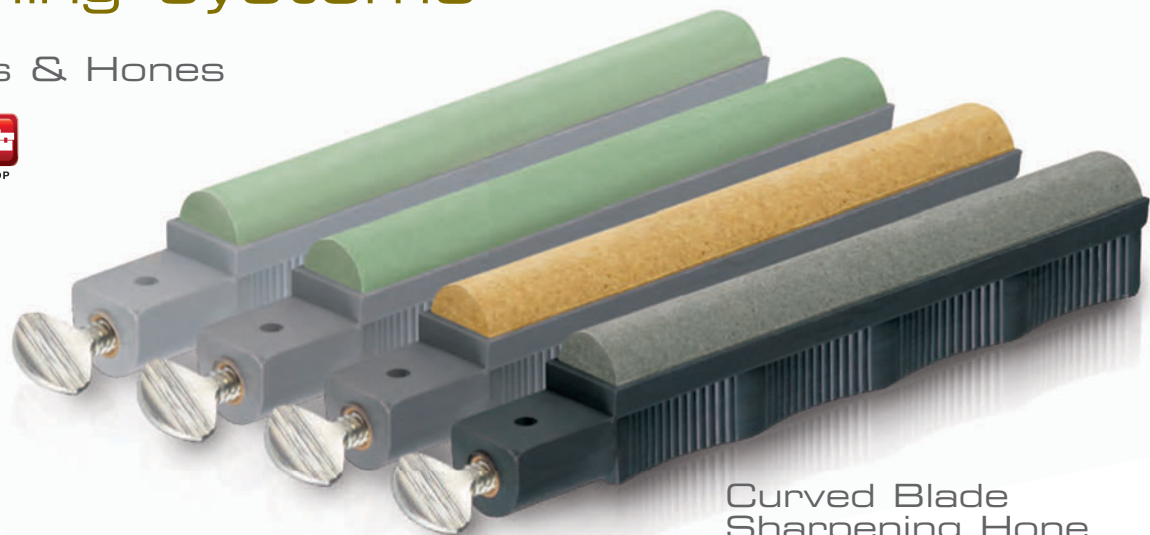
- 2 sharpening kits
- 4 accessory mounts
- 5 sharpening hones
- 6 pocket size sharpeners
- 8 tungsten carbide
- 10 tactical
- 11 fishing
- 12 workshop
- 14 benchstones
- 16 kitchen sharpeners
- 18 knives & survival



outdoor kitchen shop

controlled-angle sharpening systems

Mounts & Hones



Curved Blade Sharpening Hone 4-pack

STOCK#HRSET

Specifically designed to sharpen inwardly curved blades such as kukris, karambits, hawkbills and scythes. This set of hones will quickly bring any inwardly curved blade from completely dull to razor sharp.

Lansky's exclusive, pin and post design provides you with an easy-to-use flip over feature and works with all Lansky clamps. This allows you quick, simple and safe sharpening of both sides of the blade.

Universal Mount

STOCK#LM009

Features include:

- Compact lightweight aluminum construction
- Disassembles for easy storage in your sharpening kit
- Fits in your sharpening system carrying case
- Pre-drilled base can be screwed to your work bench. (screws not included)



Convertible Super "C" Clamp

STOCK#LM010

A unique two-piece design that allows you to attach your Lansky Sharpening System on vertical, horizontal or curved surfaces.



Pedestal Mount

STOCK#LM007

Features include:

- Designed for increased stability
- Lightweight single-piece unit
- Screw holes to facilitate optional mounting (screws not included)



Curved Blade Hones



Curved Blade: Coarse
STOCK#HR120
For quickly producing a cutting edge on inwardly curved blades such as kukris, karambits, hawkbills and scythes.



Curved Blade: Fine
STOCK#HR600
For refining an already sharp edge on inwardly curved blades such as kukris, karambits, hawkbills and scythes.



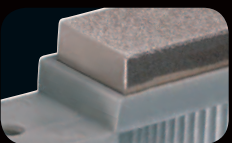
Curved Blade: Medium
STOCK#HR280
Excellent for keeping a sharp edge on inwardly curved blades such as kukris, karambits, hawkbills and scythes.



Curved Blade: Ultra-Fine
STOCK#HR1000
For polishing an already sharp edge to razor sharpness on inwardly curved blades such as kukris, karambits, etc.



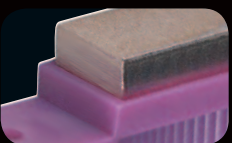
Extra Coarse
STOCK#S0070
For beveling and reshaping of extremely dull & deteriorated knives.



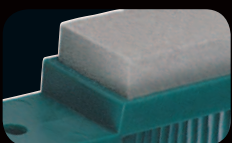
Extra Coarse Diamond
STOCK#LDHXC
Used to start the edge of extremely dull or deteriorated knives.



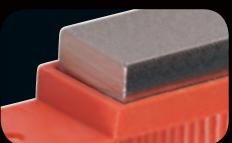
Coarse
STOCK#S0120
For producing the fastest cutting edge on all types of knives for home use, sportsmen & woodcarvers.



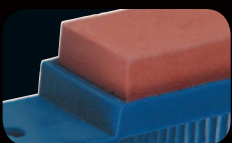
Coarse Diamond
STOCK#LDHCR
For reconditioning dull blades to produce a fast edge.



Medium
STOCK#S0280
Excellent for keeping a fine sharp edge on hunting, fishing, kitchen and pocket knives.



Medium Diamond
STOCK#LDHMD
For a very fine edge or touching up an already sharpened blade.



Fine
STOCK#S0600
A good finishing stone for sharpening high quality cutlery.



Fine Diamond
STOCK#LDHFN
Excellent for keeping a fine sharp edge on all knives.



Ultra-Fine
STOCK#S1000
Used to produce a highly polished, sharp edge.



Super Sapphire
STOCK#S2000
Used to achieve the ultimate, factory-style finish on an already sharpened blade.



Natural Soft Arkansas
STOCK#S0300
To quickly achieve a sharp edge on a dull blade.



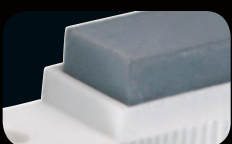
Medium Serrated
STOCK#LSMRT
For a very fine edge or touching up a serrated blade. Plus, fish hook V-groove.



Natural Hard Arkansas
STOCK#S0650
Perfect for touching up a sharpened edge.



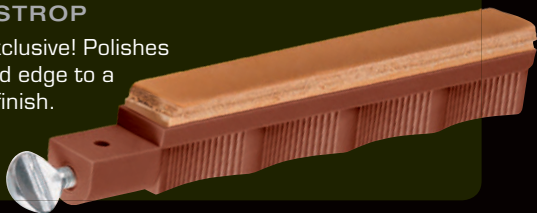
Fine Serrated
STOCK#LSERT
For a very fine edge on a serrated blade. Plus, fish hook V-groove.



Natural Black Hard Arkansas
STOCK#SOBHA
For a very fine edge or touching up an already sharpened blade.

Leather Strapping Hone

STOCK#HSTROP
A Lansky exclusive! Polishes your finished edge to a mirror-like finish.



on-the-go
sharpening

Light & Compact: This collection of pocket-sized sharpeners will keep your knife sharp and ready when you need it most.



 **Spyder Sharpener**
STOCK#LTRSP

A multi-tasking sharpener designed with three different radius to sharpen most serrated knives including the unique Spyderco® pattern.

Included is a special groove for sharpening fish hooks and other pointed objects, non-slip thumb and finger rests plus a keychain.



 **Multi-Sharpener**
STOCK#LTRIM

Designed to sharpen all of the most common serrated blade edges. Maintain that safe factory-new edge and prolong the life of the knife. Sharpen fish hooks and pointed objects using the "V" channel.



 **Mini Dog Bone Sharpener**
STOCK#LCDOG

This alumina ceramic rod is a super compact sharpener, and perfect for quick sharpening. Featuring a convenient key chain attached to colorful, non-slip finger guards.



 **Cold Steel® Sharpener**
STOCK#LTRCS

A "must have" for any owner of Cold Steel knives, this is the ONLY sharpener that will sharpen Cold Steel brand knives. Featuring key chain and colorful, non-slip finger guards.



"The Mini" Knife Sharpener
STOCK#LCKEY

A compact, lightweight and versatile knife and fish hook sharpener. It features two removable alumina ceramic sharpening rods that easily reposition for fish hook sharpening, or easy cleaning. Includes key chain.



 **Hard Arkansas Pocket Stone**
STOCK#LSAPS

1" x 3" Arkansas stone quickly sharpens pocket or outdoor knives. V-grooves are for sharpening hooks and other pointed objects. Comes with a leather carrying pouch.



 **Diamond Pocket Stone**
STOCK#LDPST

1" x 3" diamond grit sharpener. Full diamond sharpening surface on both sides. V-groove is for sharpening fish hooks and other pointed objects. Comes with a leather carrying pouch.



tungsten carbide sharpeners

Hammerhead™ Sharpener & Opener

STOCK#HH01



- Carbide sharpens
- Ceramic polishes
- Ergonomic rubberized soft grip
- Bottle cap opener
- Beverage tab opener



Celebrate the outdoors and open up a cold one!

The Hammerhead™ combines Lansky's popular V-shaped Tungsten Carbide and Ceramic sharpening elements with a convenient bottle cap opener and beverage tab opener.

The ergonomic rubber safety handle is both safe and easy to use right or left handed.



Perfect for camping, barbequing, tailgating, hunting or home use.



Quick Edge

STOCK#LSTCS

The precision V-shaped tungsten carbide sharpening element will restore even the most abused blade in a few strokes.



12 PIECE QUICK EDGE BOWL DISPLAY
STOCK#BLSTCS12



Deluxe Quick Edge

Includes a roomy, rubber non-slip grip for maximum comfort and control, safety thumb rest and a lanyard hole.

STOCK#LSTCN

CAMO
STOCK#LSTCN-CG



UNIVERSAL Bowsharp™ Bowhunting Tool

STOCK#BSHARP



Designed with the serious archery enthusiast in mind.

The integrated broadhead wrench and carbide sharpener make quick work of changing and sharpening broadheads.

Features collapsible Allen Wrenches ranging from 5/64 to 7/32, along with phillips and flathead screwdrivers.



Featuring five essential tools in one portable package:

- Broadhead wrench built in
- Carbide sharpens broadheads
- Carbide also sharpens knives
- Allen wrench set (8 wrenches): 7/32, 3/16, 5/32, 9/64, 1/8, 7/64, 3/32, 5/64
- Phillips & flathead screwdriver
- Ergonomic soft rubber grip



Ideal for essential maintenance to any bow or blade in the field.

CARBIDE/CERAMIC Quick Fix

Tungsten carbide side and ceramic polishing hones quickly keen a blade.

STOCK#LCSTC

CAMO

STOCK#LCSTC-CG



24 PIECE QUICK FIX BOWL DISPLAY
STOCK#BLCSTC24



The tungsten carbide sharpening side puts a new edge on your knife. Finish the edge with just a few strokes on the ceramic polishing hones.

Broadhead Arrow Sharpener

With Universal Broadhead Wrench

STOCK#LTCBH

Compact and portable. Tungsten carbide elements are placed externally to sharpen broadhead arrows.

The universal broadhead wrench works with 2,3,4 and 5-bladed broadheads.

Also can be used to touch-up a knife.



portable sharpening

TACTICAL Blademedic™ STOCK # PS-MED01

The first responder for field repairs on all types of knife blades. It's like having an entire sharpening kit right in your pocket. Refresh regular or serrated blades, gut hooks, hunting, fishing, and more. Four sharpening elements.



First Aid
for your **Blade!**



Tungsten Carbide
Just three or four strokes will restore your blade.



Ceramic Finishing
Polish to a finished edge in three or four strokes.



Serrated Knife Sharpener
Designed to get inside the smallest serrations.



Diamond Tapered Rod
For fast reconditioning and maintenance.

DIAMOND/TUNGSTEN CARBIDE Tactical Sharpening Rod STOCK # LCD02

A tough, sharpening rod that combines the speed of Tungsten Carbide, with a fine Diamond Retractable rod. Keep it with you at all times for fast blade maintenance.



Diamond Rod

Diamond Rod Retracts into Self-storing, knurled handle

Tungsten Carbide Element

fishing sharpeners

FOLDING DIAMOND Fish Hook Sharpener STOCK # LDFHS

- 3 different size grooves will sharpen hooks up to size 14/0
- Diamond grit sharpens even the hardest hooks
- Can also sharpen knives
- Comfortable rubber molded handles
- Fits into your pocket or tackle box
- Marine grade materials
- * Knife & hooks not included



TUNGSTEN CARBIDE Filet & Bait Knife Sharpener STOCK # LSTCF

Lansky's Quick Edge Fillet & Bait Knife Sharpener will keep those knives sharp or will put a sharp new edge on a dull knife with just a few strokes.

- Marine Grade Materials
- Tungsten Carbide Sharpening Heads
- Ergonomic Grip
- Finger Guard & Thumb Rest
- Stores easily in your tackle box or on your boat



Fish Hook Sharpener STOCK # LFISH

Special multi-groove sharpening stone allows you to quickly and easily sharpen most sizes and shapes of fish hooks. Each groove width, depth and angle has been designed to best sharpen various hook designs and sizes. Attach to your fishing vest or key ring.

* HOOKS NOT INCLUDED



workshop
sharpeners

TUNGSTEN CARBIDE
Axe & Machete
Tool Sharpener
STOCK#LASH01

A Lansky exclusive! The Tungsten Carbide sharpening head will sharpen the toughest blades with just a few strokes.

Safety features include a comfort grip for secure handling and built in hand guard.

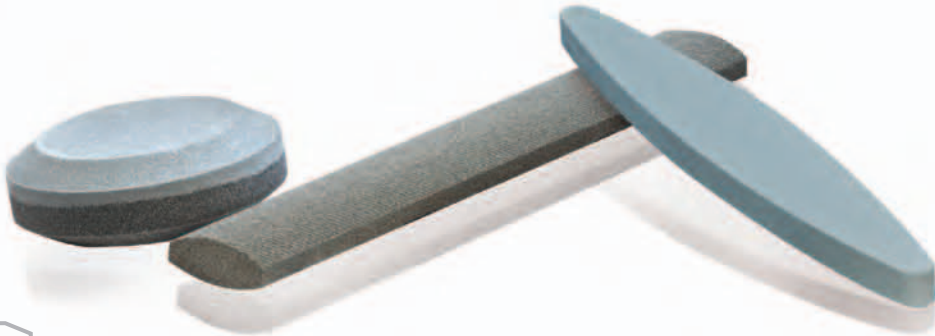
Ideal for any tool with a long working edge such as axes, hatchets, machetes, shovels, lawn mower blades and garden tools.



Tungsten Carbide sharpening head

Hand-guard keeps your fingers safe.

Generously sized comfort grip handle



The Puck
Sharpening Tool
STOCK#LPUCK

Dual-Grit (coarse/medium) design allows for quick blade sharpening and finishing. Easy to grip compact size make it perfect for the shop or the field. Ideal for lawn mower blades, machetes, hatchets, axe blades, shovels, spades and more.



Heavy Duty
Sharpening Tool
STOCK#LHONE

Lansky engineered ceramic Abrasive Sharpening Hone, Designed for heavy-duty sharpening of damaged and abused power and hand tools. Makes restoration and sharpening simple and fast.



Lawn & Garden
Sharpening Tool
STOCK#LGRDN

Designed and shaped to make easy sharpening work of all your garden tools and edged hand tools including the blades of gas-powered and electric lawn mowers.



compact
folding storage

FOLDING DIAMOND
Tapered Rod
STOCK#TR-600

Compact and lightweight! A tapered 3.5" fine diamond grit rod with a robust folding ergonomic handle for storage. Sharpens and maintains straight-edged blades, serrated blades, and even gut hooks.



Diamond Folding Sharpening Paddles
Full surface diamond sharpeners in one compact, folding unit.

DIAMOND FOLDING
Double-Sided
Paddles

COARSE/FINE
STOCK#FP-1260
A coarse grit side for sharpening or resetting dull edges and a fine side for finishing.

MEDIUM/FINE
STOCK#FP-2860
Features a medium grit side for everyday sharpening and a fine side to finish an edge.



DIAMOND FOLDING
Single-Sided
Paddles

MEDIUM
STOCK#FP-280
FINE
STOCK#FP-600

ULTRA FINE
STOCK#FP-1000



(3.625" x .8125" / 9.2 x 2.1 cm) sharpening surfaces

workshop
benchstones

DIAMOND ALUMINA-OXIDE CERAMIC
Tri-Stone Benchstone

STOCK#BS-TR100



The most versatile 3 Stone Sharpener available, engineered and built to last by Lansky to be a stand alone sharpening center. Three sharpening surfaces: Diamond, Alumina-Oxide, and Ceramic.

The sturdy plastic base boasts a wide low-profile footprint with non-slip rubber feet giving greater stability, and safety.

Diamond
Quickly set and edge

Alumina-Oxide
Refine an edge

Ceramic
Finish and polish your edge



Combo Stones

A convenient Coarse/Fine Dual-Grit design. Uses include: pocket, hunting and fishing knives, utility knife blades, cutting tools for gardening, woodworking, and industrial cutting tool edge maintenance.

2" X 8"
STOCK#LCB8FC

2" X 6"
STOCK#LCB6FC



Nathan's Natural Honing Oil

4 OZ.

Specially formulated for use with Lansky Sharpeners and Natural Arkansas Benchstones. Just a few drops will protect the stone and give you a professional edge.

STOCK#LOL01

Double-Diamond Benchstones

Lansky's Double-Sided Diamond Benchstones features a dual grit design for maximum value and versatility. Fast sharpening and finishing in one unit. Non-slip feet and rubber frame keeps the benchstone steady when in use. Screw receivers in the base for optional bench mounting.

6" X 2" COARSE/FINE
STOCK#DB-1260

6" X 2" MEDIUM/FINE
STOCK#DB-2860



(6" x 2" / 15 x 5 cm)

Natural Arkansas Benchstones



SOFT 6" X 2"
STOCK#LBS6S

SOFT 8" X 2"
STOCK#LBS8S

Ideal for chisels, planer blades, axes and other large tools. The Soft Arkansas Benchstone is the most versatile for general purpose sharpening.

HARD 6" X 2"
STOCK#LBS6H

Achieve an exceptionally fine polished edge with this natural hard stone. The ultimate finishing stone for professionals and do-it-yourselfers alike.

Diamond Benchstones

Lansky's Diamond Benchstones feature a self-storing case that raises the stone for maximum safety and comfort. Non-slip rubber base keeps the benchstone steady.



MEDIUM 6" X 2"
STOCK#LDB6M

FINE 6" X 2"
STOCK#LDB6F

ULTRA FINE 6" X 2"
STOCK#LDB6E

kitchen sharpeners

Master's Edge Sharpener
STOCK#MEDGE1



The Master's Edge Knife Sharpener has pre-set, 17°, 20° and 25°, rod angles for a precision edge

17° Fine angle:
Recommended for fillet and fine slicing

20° Fine angle:
Recommended for slicing, butcher, paring and skinning knives.

25° Medium angle:
Recommended for hunting, camping, utility and chef's knives.

Hand guard in closed position



Rods store in the durable base

The new Master's Edge Sharpening System includes a pair of both medium (grey) and fine (white) ceramic rods for sharpening and professional grade polishing. Also included in the system is the new medium ceramic triangular rod which will sharpen all types of serrations as well as awls and fish hooks. Featuring three of the most common sharpening angles of 17°, 20° and 25°, the Master's Edge features a rubberized no-slip base, easy snap in rod storage, and an integrated hand guard.



Serrated
3 radius rod for all size serrations



Straight
Sharpen all your straight edged knives

SELF-STORING Turnbox Sharpening Systems

A very stable, lightweight and compact knife sharpening system that works well in the kitchen and quickly breaks down for storage. They are also perfect take-along sharpeners for outdoorsmen on the go.



Pre-set, 20° and 25°, rod angles for a precision edge

20° Fine angle:
Recommended for slicing, fillet, butcher, paring and skinning knives.

25° Medium angle:
Recommended for hunting, camping, utility and chef's knives.

Rods store in the durable wood Turn Box base

DIAMOND/CERAMIC Four Rod Sharpener WITH TURN BOX
STOCK#TB-2D2C

Includes: four 5" rods: two medium grit diamond for sharpening, two fine grit ceramic for polishing, along with the Lansky TurnBox base.



ALUMINA CERAMIC MEDIUM/FINE Four Rod Sharpener WITH TURN BOX
STOCK#LCD5D

Includes: four 5" ceramic rods: two medium grit for sharpening, two fine grit for polishing, along with the Lansky TurnBox base.



ALUMINA CERAMIC MEDIUM Two Rod Sharpener WITH TURN BOX
STOCK#LCS5D

Includes: two 5" medium grit ceramic rods for sharpening, along with the Lansky TurnBox base.



Eraser Block
STOCK#LERAS

Used to clean metal filings from all Lansky ceramic products.

Sharp Sticks

The Diamond and Steel Sharp Sticks each feature an non-slip rubber, comfort-grip with hand guard. The diamond grit makes proper maintenance of your finest knives faster and more efficient than ever before.



Diamond

DIAMOND 9 INCH
STOCK#LSS9D

DIAMOND 13 INCH
STOCK#LSS13D

Steel

STEEL 9 INCH
STOCK#LSS9S

STEEL 13 INCH
STOCK#LSS13S

Ceramic

STOCK#LSS8CM

A classic butcher's sharpener with an 8" alumina ceramic sharpening rod in a solid wood handle. Easily cleaned with our Eraser Block.



urban tactical
knives

Mikkel Willumsen has gained notoriety worldwide for his innovative and gritty tactical designs, which he calls Urban Tactical. Based in a repurposed factory in Copenhagen, Denmark, Mikkel has been designing and producing custom

made knives for over 10 years, specializing in high quality folders, and fixed blades. By bringing his talents and experience to Lansky, you can expect the functionally modern aesthetics that define his work, combined with Lansky Sharpeners' unwavering dedication to quality.



Responder X9
Quick Action Knife
STOCK#LKN222

The Responder X9 has been hand-crafted with amazing precision to be an exact representation of Mikkel Willumsen's custom work. The unique and aggressive Sandvik 12C27 steel blade offers excellent cutting ability, corrosion resistance and edge retention. Mikkel's extended thumb hole allows for one-handed opening and the deep pocket clip ensures your knife will remain out of sight and mind until you need it.

- ENHANCED FEATURES
- 4" Sandvik 12C27 blade
 - 9" overall length, 8.6 oz.
 - G10 handle



Responder
Quick Action Knife
STOCK#LKN111

The Responder Quick Action Knife is an EDC (Every Day Carry) sized version of the Responder X9. Ballistic glass filled nylon scales are easy on the pockets, while the thumb hole and flipper allow for lightning quick deployment.

- 3.5" 440C Stainless Blade
- 7" Overall Length, 6 oz.
- Ambidextrous Carry
- 2 Position Pocket Clip
- Nylon Handle



World Legal
Slip-Joint Knife
STOCK#LKN333

Balancing form with function, the World Legal was born from one idea: make a great knife that can be carried anywhere in the world.* Simple but efficient, it combines modern aesthetics with traditional slip-joint technology.

*Contact your local government for the most recent regulations

- 2.75" 440C Stainless Blade
- 7" Overall Length, 6 oz.
- Ambidextrous Carry
- 4-Position Deep Pocket Clip
- Nylon Handle



portable
knives & tools



20 Function Multi-Tool

- STOCK#LMT100B
- Handle Material: Stainless Steel
- Closed Length: 4 1/8"
- Storage: Reinforced Nylon Belt Sheath with Bit Pouch
- Features:
- Hardened Steel Tool With Needle Nosed Pliers/Grippers
 - Wire Cutter
 - Plain Blade
 - Serrated Blade
 - Small Screwdriver
 - Medium Screwdriver
 - File/Ruler
 - Awl
 - Magnetic Bit Holder
 - Can Opener/Bottle Opener
 - Reinforced Nylon Sheath
 - Assorted Bits

*Contact your local government for the most recent regulations



Mini Multi-Tool
Display Board

- STOCK#MT-050
- Pocket Sized
 - Lifetime Guarantee
 - Self Standing Display
- 12 Functions:
- 1 Needle Nosed Pliers/Grippers
 - 2 Wire Cutter
 - 3 Plain Blade
 - 4 Serrated Blade
 - 5 Small Phillips Screwdriver
 - 6 Small Flathead Screwdriver
 - 7 Medium Flathead Screwdriver
 - 8 Large Flathead Screwdriver
 - 9 File
 - 10 Awl
 - 11 Bottle Opener
 - 12 Can Opener



Small Lockback

- STOCK#LKN045
- Materials: 420 Stainless Steel Pins, Blade & Bolsters
- Blade Length: 2 1/4"
- Blade Finish: Satin
- Handle Material: Impact Resistant ABS with Rubber Grip Insert
- Handle Length: 3 1/4"
- Features: Pocket Clip

essential
survival tools

T.A.S.K.
Tactical Apocalypse
Survival Kit
STOCK#LTASK



prepare. survive.

Designed by Lansky to serve as the core of your emergency bag. The T.A.S.K. is housed in a 20L tactical backpack which allows you to “bug out” in a flash. Features padded back panel, a large main compartment plus a front pouch, both with organizational gear pockets, M.O.L.E. attachments, adjustable hip and sternum straps, water bottle holder and compression straps to lock down the load.

- Includes:**
- Multi Use Battle Axe (pg. 21)
 - 20 Function Multi-Tool (pg. 19)
 - Easy-Grip Knife (pg. 20)
 - Blademedic Sharpener (pg. 10)
 - The Puck - Dual Grit (pg. 12)
- Plus:**
- **LifeStraw® Water Purification:** This powerful device filters dangerous bacteria and protozoa, exceeding EPA standards for water filtration. Allows you to drink directly from lakes, rivers, or your water bottle by simply putting the lower part of the straw in the water and sipping. Filters up to 264 gallons (1,000 liters).
 - **Tactical Flashlight:** This ergonomic flashlight is compact, bright and rugged. Constructed of aluminum alloy and featuring a belt clip, lanyard, multiple light output setting and an ultra bright LED.
 - **Firesteel/Compass:** Creates a flood of sparks when scraped against the striker edge to produce fire when you desperately need it. The compact button compass aids in navigation.
 - **Paracord Bracelet:** A practical way to carry up to 8' of 550 paracord for when you need it most. Easy to take apart in an emergency, this extra bit of cording could mean the difference between surviving or not. Featuring a plastic buckle for securing to your wrist or pack.

Evader
STOCK#LKN003
Materials: 420 Stainless Blade
Blade Length: 3 1/4"
Blade Finish: Black
Handle Material: Textured Aluminum
Handle Length: 4 1/2"
Features:

- Straight Blade
- Removable Pocket Clip
- Wrist Assist Opening
- Liner lock

Evader, Serrated
STOCK#LKN004
Materials: 420 Stainless Blade
Blade Length: 3 1/4"
Blade Finish: Black
Handle Material: Textured Aluminum
Handle Length: 4 1/2"
Features:

- 1/3 Serrated Blade
- Removable Pocket Clip
- Wrist Assist Opening
- Liner lock

Easy Grip
STOCK#LKN030
Materials: 420 Stainless Blade
Blade Length: 3 5/8"
Blade Finish: Bead Blast
Handle Material: Textured Rubber
Handle Length: 4 3/4"
Features:

- Nylon Belt Sheath
- 1/3 Serrated Blade
- Ambidextrous Opening
- Lockback

Lansky Battle Axe
STOCK#AX-911

Designed with the close advisement of numerous Professional Firefighters from concept through final production, the Lansky Battle Axe is the multi-purpose “sidearm” of choice for rescue personnel. It is also great for processing wood and makes a fantastic campsite companion.



Comes with a heavy duty genuine leather sheath and boasts a knurled non-slip handle.

Slip-Resistant Handle

Reinforced Nylon Sheath

1075 Tool Steel Blade
Load bearing to 600 lbs.

Impact Tool

Pry Bar

Gas Valve Wrench

Hose Wrench

Handle Insulated up to 10,000 Volts

13" Full Tang Carbon Steel Blade

Robust Hand Guard

Kukri
STOCK#KUKMA
The Lansky Kukri is carefully designed after the famous workhorse tool of the Gurkha warriors of Nepal. It features an aggressive 13 inch carbon steel blade with full tang construction to handle the most rugged outdoor tasks. It also boasts a robust hand guard and ballistic nylon sheath that allows for extra safe handling no matter the task.

Lansky's entry into the sharpening world started 35 years ago when Arthur Lansky Levine, a medical student and prospective coroner was consistently disappointed by the sharpness of his surgical tools. He started tackling the challenge of making a sharpener that anyone could use to get a razor sharp edge on his or her tools and knives, regardless of their sharpening experience.

"When I was a kid, I used to visit my uncle, who was the county coroner, and I remember being fascinated by the knife sharpener they used for scalpels. Having grown up within the outdoor sporting business and remembering my father's advice to provide something that everybody can use: I started fiddling around with a sharpening system" –Arthur Lansky Levine, 1987

A true American success story, Arthur developed the legendary Controlled Angle Sharpening System and launched Arthur Lansky Levine & Associates out of his parents' basement in 1979. Using contacts from his outdoor retail experience, Arthur started supplying his new system to outdoor retailers worldwide. The popularity of his sharpening system grew.

Lansky steadily innovated new sharpening tools for outdoors, kitchen and shop, while keeping much of the production and assembly right here in the United States. As the line continued to develop, so did the Lansky brand, reaching more retail stores and consumers, steadily becoming the most extensive line of sharpening equipment and accessories found today.

35 years later, Lansky Sharpeners continues to honor Arthur's legacy: to design, create and provide high quality tools that allow anyone, regardless of their experience, to sharpen their blades.

An edge above the rest.®

LANSKY
▲ SHARPENERS



Specifications subject to change without notice. Products shown in this catalog are either manufactured by or made for LANSKY SHARPENERS. LS®, Lansky Sharpeners®, Crock Stick®, Mini Dog Bone®, Nathan's Natural®, Sharp Stick®, and Fold-A-Vee®, are all registered trademarks of Lansky Sharpeners.

P.O. Box 800, Buffalo, New York 14231 USA
716 - 877 - 7511 FAX: 716 - 877 - 6955

customerservice@lansky.com

www.lansky.com

©2014 Arthur Lansky LeVine & Associates Inc.